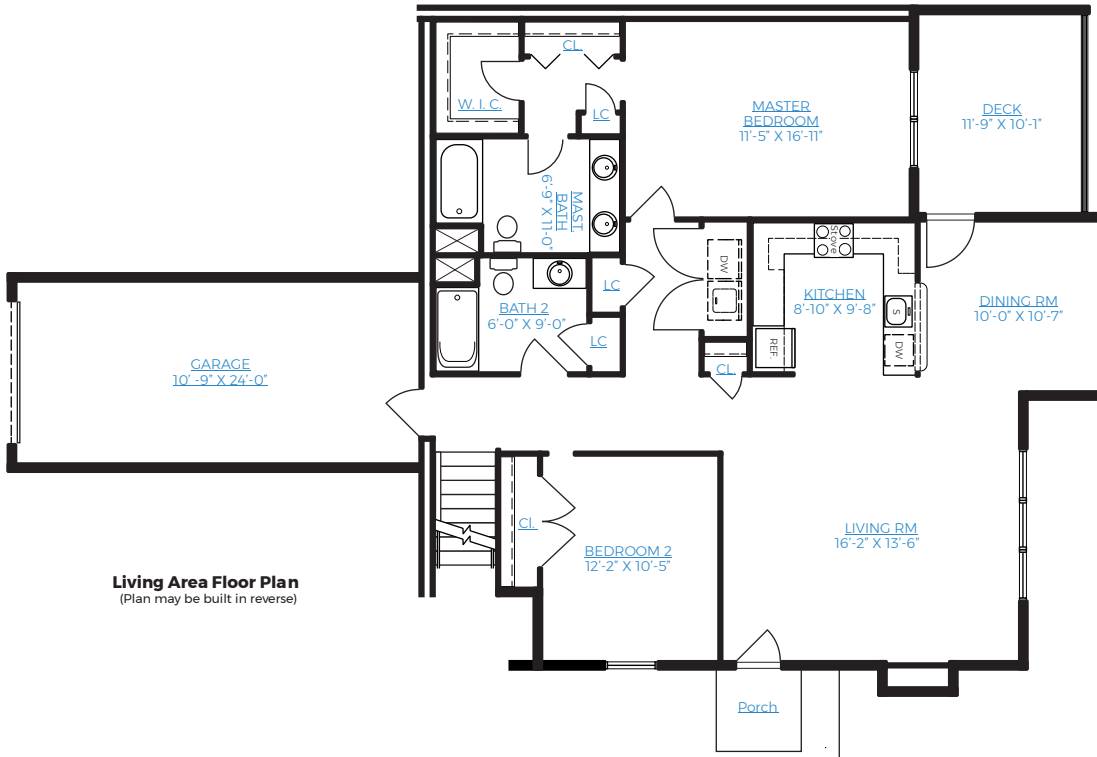


# BOSCOBEL CONDO II

## AT OVERLOOK POINTE

Two bedroom, two bath unit. Finished walk-out basement with plumbing for full bath. Exceptional river views from deck, patio and multiple rooms. Corner location on ground floor.



Scale: ■ = 1 sq. foot

BO2 Unit	1,334 sq.f.
FIN. BASEMENT	723 sq.f.
Deck	118 sq.f.
Garage	293 sq.f.
UNFIN. BASEMENT	411 sq.f.
<b>Total</b>	<b>2,879 sq.f.</b>

